

College of Kinesiology



The College of Kinesiology Graduate Program is prominent in several research areas at both the national and international level. Contributing to this prominence is the strength of individual faculty research programs and the continued mentorship and graduation of excellent students. Our students are highly successful in attaining Tri-Council awards, University Graduate scholarships, and present their work regularly at major conferences, often within their first year. The focus of the program is on research and scholarly activity, and students are actively encouraged to publish their research while pursuing their degree. The program supports about 50 graduate students across the different areas.

Graduate Studies

The program offers M.Sc. and Ph.D. degrees in the following areas:

- [Physical activity and musculoskeletal health across the lifespan](#)
 - ✓ [Longitudinal Growth and Development](#)
 - ✓ [Biomechanics and Motor Control](#)
 - ✓ [Neuromuscular Adaptations to Physical Activity and Disease](#)
 - ✓ [Bone Health Across the Lifespan](#)
 - ✓ [Metabolic and Endocrinological Adaptations to Changes in Physical Activity, Nutrition, and Disease](#)
- [Social psychological research in physical activity for health promotion and disease prevention](#)
- [Women and girls' physical activity and health](#)
- [Pedagogy](#)

Training of our students is enhanced by the opportunity to be immersed in a research-rich environment. Students have access to office and lab space and the opportunity to work in a collaborative research atmosphere.



Funding/Scholarships

Various College and University scholarships are available for new graduate students to the program, dependent upon academic standing. Numerous funding scenarios are possible and incoming students are supported in applying for funding as well as considered for internal awards.

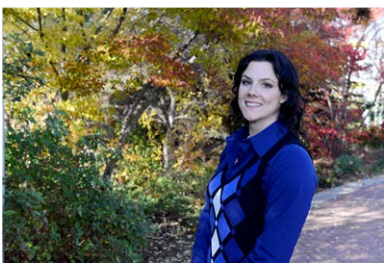
- [Funding](#)

Career Paths

Each area of specialization offers a range of potential career paths. Alumni from our graduate program are university professors, health care professionals and consultants, researchers, policy consultants, and leaders in program delivery for education, human health, sport and recreation fields.

More Information

Contact: Graduate Program and Research Administrative Assistant
College of Kinesiology,
University of Saskatchewan
Office 300.8 PAC
87 Campus Drive, Saskatoon,
Saskatchewan,
CANADA S7N 5B2
Phone: 306.966.1113
Fax: 306.966.6464
Email: kin.grad@usask.ca



Being a graduate student in the College of Kinesiology has been an exciting experience. When I started university, I hadn't imagined that I would enter into graduate studies and do research—instead I wanted to be dentist or a forensics anthropologist/pathophysiological. However, my path lead me to research and now I wouldn't look back. As much as research allows me to explore my intellectual curiosity in numerous fields, it also provides me with so much freedom and flexibility to incorporate these fields into research that I feel will have an impact on everyone. As a graduate student within the College of Kinesiology at the University of Saskatchewan, I have had plenty of opportunities to work with numerous intra- and inter-collegiate research projects as well as being able to establish an international research collaboration with a well-known research group in Germany. I have also had the opportunity to teach undergraduate classes and labs. The college has been very supportive of my research and teaching endeavours, as evidenced by the research and teaching awards I have received. The College of Kinesiology is immensely supportive in helping students acquire funding during their graduate studies—a detail that is not overlooked by students! While my path is still being laid out before me, I know that the training I have as a graduate student in the College of Kinesiology will have prepared me for what lies ahead.

Chantal Kawalilak, PhD
CIHR – Fredrick Banting and Charles Best
Master's and Doctoral Research Scholar

Application Qualifications/ Requirements

All applicants will need to meet the University of Saskatchewan's College of Graduate Studies and Research requirements. For the M.Sc. students are required to have at least a 70% average on the last 2 years of a four year degree or equivalent. For Ph.D. admission, a 70% average from a Master degree or equivalent is required.

Application requirements:

- Online Application
- \$90 (CAD) non-refundable fee
- 3 references submitted through the online application
- Official transcripts of all post- secondary education
- 500-700 word cover letter indicating your research interests and your proposed area of research
- Resume
- Supervisor recommendation

See website for full application process

www.grad.usask.ca/admissions/how-to-apply.php#Beforeyouapply

Application Deadlines

June 1 to start in September Fall term

Early applications are encouraged as some funding competitions begin in December of each year. Applying early means your application will be considered for these early competitions.

For further assistance in completing application, please email: kin.grad@usask.ca

Research Supervisor

Faculty considers many applicants for few spaces each year. It is recommended that applicants contact the faculty that is doing research in an area that may interest of before beginning a formal application.

See website for Research Supervisor Portfolio

www.grad.usask.ca/programs/kinesiology.php#Researchsupervisors

Tuition and Fees

See website for Graduate Studies Tuition and Fees

www.students.usask.ca/money/tuition-fees/graduate-tuition.php#TuitionratesSept2015Aug2016

Program Requirements

Working with a research supervisor and advisory committee, students in the graduate program complete course work, design and execute a research project, gain teaching experience, connect with community and gain practical skills through their research. Typically, the M.Sc. program takes two years to complete, and the Ph.D. program takes up to five years.

See website for Degree Requirements to M.Sc. and Ph.D. programs

www.usask.ca/programs/colleges-schools/grad-studies/programs/kinesiology.php